

WAYNE STATE UNIVERSITY

James Pearson Duffy Department of Art and Art History

ART DEPARTMENT GALLERY

James Pearson Duffy Department of Art and Art History
150 Art Building
Detroit, Michigan 48202
Telephone: (313) 577-2423 Fax: (313) 577-3491

FOR IMMEDIATE RELEASE

Exhibition: *Tri-County High School Exhibition*
Dates: March 21 through April 4, 2014
Opening Reception: Friday, March 21, 5-8PM (including award announcements at 6:00PM)
Gallery Hours: Tuesdays through Thursdays 10AM to 6PM and Fridays 10AM to 7PM
Contact: Thomas L. Pyrzewski (tpyrzewski@wayne.edu)

**The James Pearson Duffy Department of Art and Art History's
Art Department Gallery is pleased to present**

Tri-County High School Exhibition

The James Pearson Duffy Department of Art and Art History at Wayne State University, Detroit, MI is pleased to present its 2014 *Tri-County High School Exhibition*. The exhibition features approximately 60 artworks created by high school students from Wayne, Oakland and Macomb counties. At the opening reception, seven awards will be given to students for their outstanding artworks in the exhibition. The awards include First Place, Second Place, Third Place, Teacher Award, and three Honorable Mentions. This year's guest juror is Jim Nawara, Professor of Painting and Drawing at Wayne State University.

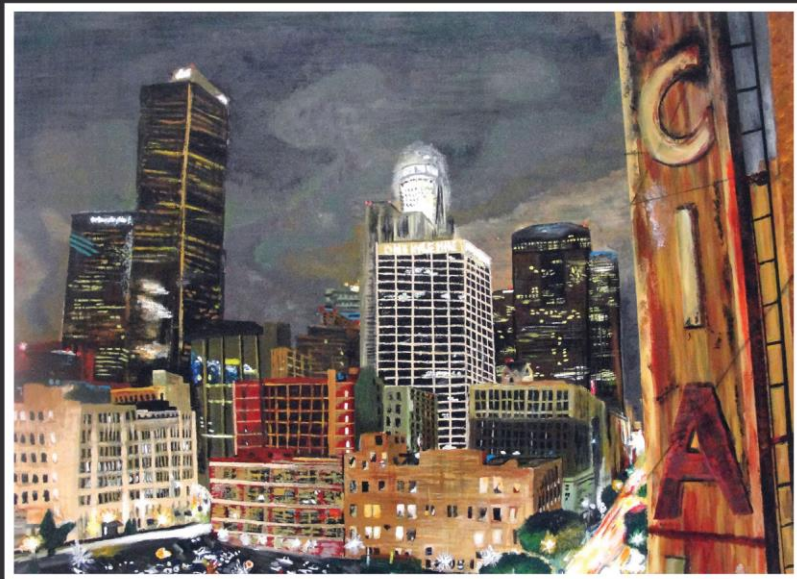
Selected artworks were created by students from the following schools: Bloomfield Hills High School, Cass Technical High School, Detroit Country Day High School, East Detroit High School, Flat Rock High School, Frankel Jewish Academy, Grosse Pointe South High School, L'Anse Creuse High School, Lake Orion High School, Lakeview High School, Novi High School, Roseville High School, Stoney Creek High School and Waterford Kettering High School.

This event is free and open to the general public. The Art Department Gallery is located in the Art Building on the campus of Wayne State University, near the intersection of Cass Avenue and Kirby Street.

The James Pearson Duffy Department of Art and Art History is a division of Wayne State's College of Fine, Performing and Communication Arts, educating the next generation of visual artists, designers and art historians. Wayne State University, located in the heart of Detroit's midtown cultural center, is a premier urban research university offering more than 350 academic programs through 13 schools and colleges to more than 31,000 students.

For more information, please contact Thomas L. Pyrzewski (tpyrzewski@wayne.edu)

TRI-COUNTY HIGH SCHOOL EXHIBITION



Chicago Nights by Francesca Ortisi, L'Anse Creuse High School, 2013

March 21 - April 4, 2014